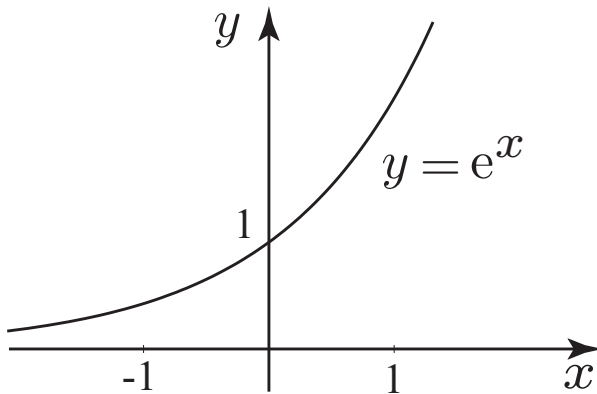
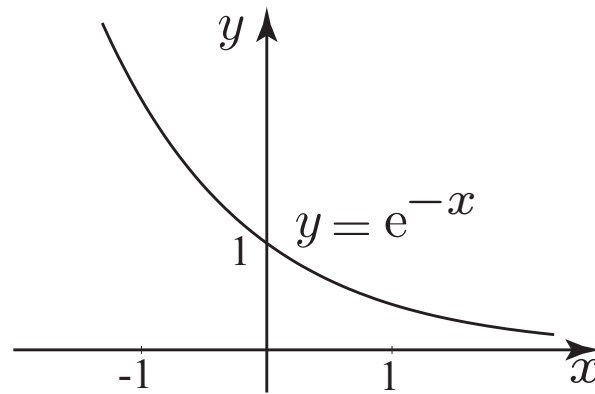


# Graphs of common functions

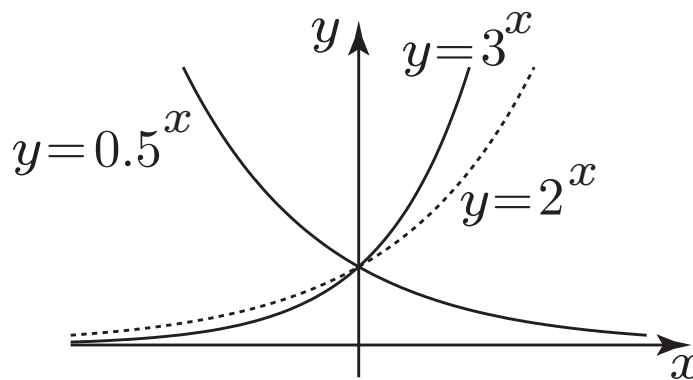
## Exponential functions



Graph of  $y = e^x$  showing exponential growth

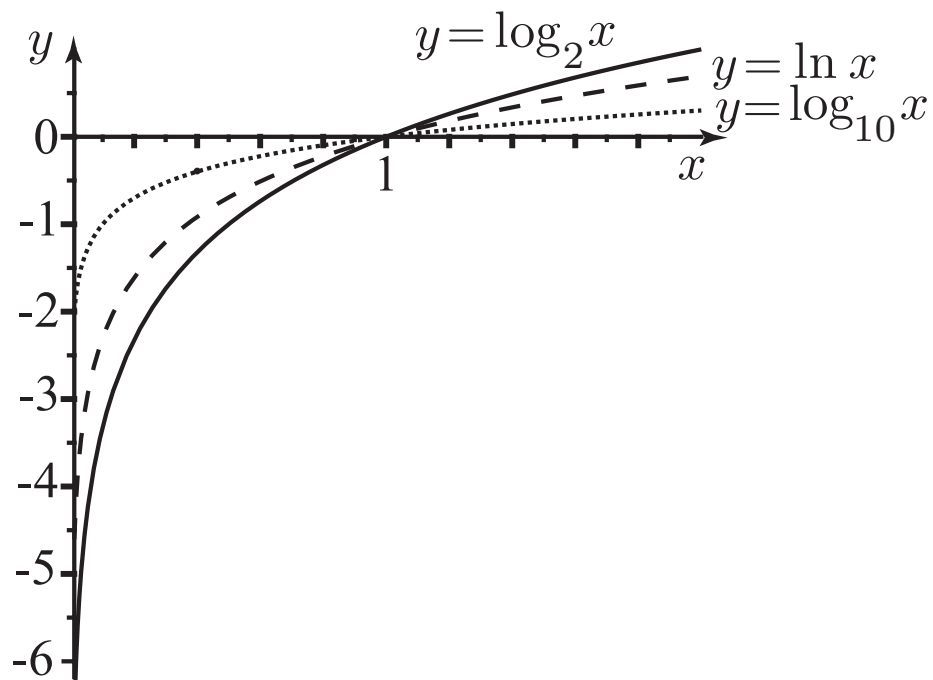


Graph of  $y = e^{-x}$  showing exponential decay



Graphs of  $y = 0.5^x$ ,  $y = 3^x$ , and  $y = 2^x$

## Logarithmic functions



Graphs of  $y = \ln x$  and  $y = \log_{10} x$  and  $y = \log_2 x$

## The growth of some functions

